



QPS

Quality Piping Solutions

Building Stronger Networks with
Quality Piping Solutions

www.qualitypipings.com | [f](#) [@](#) [v](#) [qps4.u](#)



ABOUT US

Quality pipings is a leading supplier of high quality piping materials & products. All kind of piping materials are available at reasonable prices.

Our products consists of high quality pipes, structural steel products, pipe fittings, flanges, branch outlets, valves and other items required in various industries and other users.

A man with a beard and safety glasses is focused on his work in a factory. He is wearing a blue shirt and is surrounded by industrial machinery. The background is slightly blurred, showing more of the factory environment. The overall color palette is dominated by blues and greys, with some warm tones from the machinery.

VISION & VALUES

Our business has a stable growth since we began our journey towards becoming the one-stop shop for all piping materials & products. Quality and client satisfaction are what we value the most—creating a strong bond with the customers and clients.

OUR MISSION

We aim to become the largest and most preferred supplier of quality pipes and fittings. Only supreme quality products are delivered making us the most trusted source for suppliers and users.

OUR ADVANTAGE

Serving our clients with top-of-the-line quality products ensuring client satisfaction and delivering the products on time is our peculiarity.



PRODUCTS

I PIPES



I FLANGES



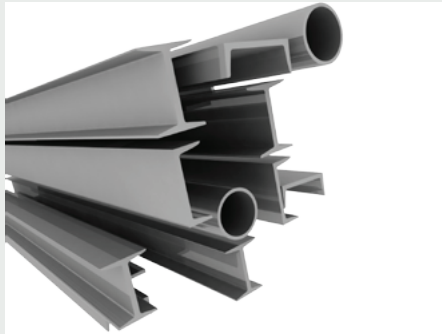
I VALVES



I PIPE FITTINGS



I STRUCTURAL STEEL PRODUCTS



I GASKETS



I STUD BOLTS & NUTS



I BRANCH OUTLETS



I HAMMER UNION



I GROOVED FITTINGS



I GI & MS FITTINGS



I CUSTOM FABRICATION ITEMS





Stainless Steel Pipes & Duplex Pipes

STAINLESS STEEL PIPES & DUPLEX PIPES

MATERIALS GRADE & STANDARD SPECIFICATIONS	TYPES	SCHEDULES	LENGTHS	END FINISHES	SURFACE FINISH
<ul style="list-style-type: none"> ASTM A312 TP304/304L ASTM A312 TP316/316L ASTM A312 TP321 ASTM A312 TP347 ASTM A358 (Welded) ASTM A790 (Duplex) 	<ul style="list-style-type: none"> Seamless Pipes: 1/2" to 24" ERW (Electric Resistance Welded) Pipes: 1/2" to 24" Welded Pipes: 1/2" to 120" 	<ul style="list-style-type: none"> SCH 5S, SCH 10S, SCH 40S, SCH 80S 	<ul style="list-style-type: none"> 6m, 12m, 18m, 20ft, 40ft (Custom lengths available) 	<ul style="list-style-type: none"> Plain End Beveled End 	<ul style="list-style-type: none"> Mill Finish Polished Finish (180 Grit, 240 Grit, 320 Grit)
GRADES AVAILABLE		DUPLEX DETAILS	ORIGIN		
<ul style="list-style-type: none"> 304 (1.4301) 304L (1.4307) 316 (1.4401) 316L (1.4404) 321 (1.4541) 347 (1.4550) Duplex 2205 (1.4462): High strength, corrosion resistance Duplex 2507 (1.4410): Super duplex, high corrosion resistance 		<ul style="list-style-type: none"> Duplex 2205: UNS S31803, EN 1.4462 Duplex 2507: UNS S32750, EN 1.4410 Duplex pipes available in seamless & welded 	<ul style="list-style-type: none"> Europe India China Japan South Korea USA 		



Carbon Steel Pipes

CARBON STEEL PIPES

MATERIALS GRADE & STANDARD SPECIFICATIONS	TYPES	SCHEDULES	LENGTHS	END FINISHES	COATING	
<ul style="list-style-type: none"> ASTM A106 Gr. B/C (Seamless) ASTM A53 Gr. B (Seamless & ERW) API 5L Gr. B/X42/X46/X52/X60/X65/X70 (Seamless & Welded) ASTM A333 Gr. 6 (Low Temperature) ASTM A671 CC60/CC70 (Welded) 	<ul style="list-style-type: none"> Seamless Pipes: 1/2" to 24" ERW (Electric Resistance Welded) Pipes: 1/2" to 24" LSAW (Longitudinal Submerged Arc Welded) Pipes: 16" to 60" SSAW (Spiral Submerged Arc Welded) Pipes: 16" to 120" 	<ul style="list-style-type: none"> SCH 20, SCH 30, SCH 40, SCH 60, SCH 80, SCH 100, SCH 120, SCH 140, SCH 160, SCH XXS 	<ul style="list-style-type: none"> 6m, 12m, 18m, 20ft, 40ft (Custom lengths available) 	<ul style="list-style-type: none"> Plain End Beveled End Threaded End 	<ul style="list-style-type: none"> Black Painting Galvanized 3LPE (Three Layer Polyethylene) FBE (Fusion Bonded Epoxy) 	
ORIGIN		GRADES AVAILABLE				
<ul style="list-style-type: none"> India China Japan South Korea Europe USA 		<ul style="list-style-type: none"> A106 Gr. B/C A53 Gr. B API 5L Gr. B API 5L X42 API 5L X46 	<ul style="list-style-type: none"> API 5L X52 API 5L X60 API 5L X65 API 5L X70 A333 Gr. 6 (Low Temperature) 			

Brands We Offer



FLANGES



CARBON STEEL & STAINLESS STEEL FLANGES

TYPES	SIZES	PRESSURE RATINGS	MATERIALS	STANDARDS
<ul style="list-style-type: none"> • Weld Neck Flanges • Slip On Flanges • Blind Flanges • Socket Weld Flanges • Threaded Flanges • Lap Joint Flanges 	<ul style="list-style-type: none"> • 1/2" to 120" • DNI5 to DN3000 	<ul style="list-style-type: none"> • Class 150 • Class 300 • Class 600 • Class 900 • Class 1500 • Class 2500 	<ul style="list-style-type: none"> • Carbon Steel: A105, A350 LF2 • Stainless Steel: A182 F304, A182 F316, A182 F321 	<ul style="list-style-type: none"> • ASME B16.5 • ASME B16.47 • EN 1092-1 • API 605
FINISH	ORIGIN			
<ul style="list-style-type: none"> • Plain • Raised Face • Ring Type Joint 	<ul style="list-style-type: none"> • India • China • UAE (Local stock) • Europe • USA 			

Brands We Offer





PRODUCT	SIZE	MATERIALS GRADE & STANDARD SPECIFICATIONS	TYPES	END CONNECTIONS	PRESSURE RATING	OPERATION	ORIGIN
Carbon Steel Valves	1/2" to 60" (ASME B16.5, ASME B16.47)	<ul style="list-style-type: none"> • ASTM A105 • ASTM A216 WCB • API 6D 	<ul style="list-style-type: none"> • Gate Valves • Globe Valves • Check Valves • Ball Valves • Butterfly Valves • Plug Valves 	<ul style="list-style-type: none"> • Flanged • Threaded • Welded • Socket Weld 	Class 150 to 2500	<ul style="list-style-type: none"> • Manual • Gear Operated • Pneumatic • Electric 	<ul style="list-style-type: none"> • India • China • Japan • South Korea • Europe • USA
Stainless Steel Valves	1/2" to 60" (ASME B16.5, ASME B16.47)	<ul style="list-style-type: none"> • ASTM A182 F304/304L • ASTM A182 F316/316L • API 6D 	<ul style="list-style-type: none"> • Gate Valves • Globe Valves • Check Valves • Ball Valves • Butterfly Valves • Plug Valves 	<ul style="list-style-type: none"> • Flanged • Threaded • Welded • Socket Weld 	Class 150 to 2500	<ul style="list-style-type: none"> • Manual • Gear Operated • Pneumatic • Electric 	<ul style="list-style-type: none"> • Europe • India • China • Japan • South Korea • USA
Duplex Steel Valves	1/2" to 60" (ASME B16.5, ASME B16.47)	<ul style="list-style-type: none"> • ASTM A182 F51 (UNS S31803) • ASTM A182 F53 (UNS S32750) • ASTM A182 F55 (UNS S32760) 	<ul style="list-style-type: none"> • Gate Valves • Globe Valves • Check Valves • Ball Valves • Butterfly Valves • Plug Valves 	<ul style="list-style-type: none"> • Flanged • Threaded • Welded • Socket Weld 	Class 150 to 2500	<ul style="list-style-type: none"> • Manual • Gear Operated • Pneumatic • Electric 	<ul style="list-style-type: none"> • Europe • India • China • Japan • South Korea • USA

Brands We Offer



STRUCTURAL STEEL PRODUCTS



MATERIALS	TYPES	SIZE RANGE	STANDARDS & GRADES
<ul style="list-style-type: none"> Carbon Steel (Mild Steel, High Strength Steel) Stainless Steel (304, 304L, 316, 316L) 	<ul style="list-style-type: none"> Beams (I-Beams, H-Beams, UPN, UPE, IPN, HEA, HEB) Channels (C-Channels, U-Channels, JIS Channels) Angles (Equal & Unequal, L-Profiles) Plates (Flat, Chequered, Tapered, Patterned) Pipes (Hollow Sections, Square, Rectangular, Round) Tubes (Round, Square, Rectangular, Oval) Rails (Crane Rails, Railway Rails) Gratings (Welding, Press Locked, Serrated) Mesh (Willing, Expanded, Perforated) 	<p>Beams: Up to 1000mm height Channels: Up to 400mm height Angles: Up to 200mm x 200mm Plates: Up to 6m x 12m x 150mm thick Pipes & Tubes: Up to 1200mm diameter</p>	<ul style="list-style-type: none"> ASTM A36, A572, A992 EN 10025-2, EN 10210(Coated) JIS G3101, G3106 BS 4360, IS 2062

FINISHES:	FABRICATION SERVICES	ORIGIN
<ul style="list-style-type: none"> Mill Finish Painted (Shop Primer, Epoxy Coated) Galvanized (Hot Dip, Electro) 	<ul style="list-style-type: none"> Cutting & Drilling Welding & Assembly Machining Surface Treatment 	<ul style="list-style-type: none"> India China Japan South Korea Europe UAE (Local stock & fabrication) USA

Brands We Offer





PRODUCT TYPE	SIZE (RANGE)	MATERIALS GRADE & STANDARD SPECIFICATIONS
WROUGHT CARBON STEEL, LOW ALLOY STEEL & FORGED FITTINGS (ELBOW LR/SR, EQ. / UN EQ. / REDUCING TEE, RETURN BENDS, CONC./ECC. REDUCERS, STUBEND, NIPPLES, BUSHING, PLUG)	1/4"-24" (SEAMLESS) 1/4"-6" (FORGED) 26"-96" (WELDED)	ASTM A/SA 234 WPB/WPC, ASTM A/SA420WPL6, ASTM A/SA105, ASTM A/SA350LF2, ASTM A860 WPHY 42/46/52/60/65/70
WROUGHT AUSTENITIC STAINLESS STEEL PIPE FITTINGS	1/4"-24" (SEAMLESS) 1/4"-6" (FORGED) 26"-96" (WELDED)	ASTM A/SA182 F304/304L/F316/316L, F9, F11, F22/F52/F91/F92/F321 ASTM A/SA403 WP 316/316L
GI & MS PIPES	1/2" - 40"	ASTM A/SA53, ASTM A/SA106, ASTM A500, EN 10025 S275,

Brands We Offer



FORGED FITTINGS

CARBON STEEL FORGED FITTINGS



SIZE	MATERIALS GRADE & STANDARD SPECIFICATIONS	TYPES	ORIGIN
1/8" to 4" (Class 2000, 3000, 6000)	<ul style="list-style-type: none"> · ASTM A105 · ASTM A350 LF2 · ASTM A694 F42, F52, F60, F65 F70 	<ul style="list-style-type: none"> · Elbow 90D, 45D, 180D · Tee (Equal, Reducing) · Coupling (Full, Half) · Union · Cap · Plug · Bushing · Nipple 	<ul style="list-style-type: none"> · India · China · Japan · South Korea · Europe · USA

STAINLESS STEEL FORGED FITTINGS



SIZE	MATERIALS GRADE & STANDARD SPECIFICATIONS	TYPES	ORIGIN
1/8" to 4" (Class 2000, 3000, 6000)	<ul style="list-style-type: none"> · ASTM A182 F304/304L · ASTM A182 F316/316L · F9, F11, F22, F52, F91, F92, F321 	<ul style="list-style-type: none"> · Elbow 90D, 45D, 180D · Tee (Equal, Reducing) · Coupling (Full, Half) · Union · Cap · Plug · Bushing · Nipple 	<ul style="list-style-type: none"> · Europe · India · China · Japan · South Korea · USA

CARBON STEEL GASKETS



Carbon Steel Gaskets

SIZE	MATERIALS GRADE & STANDARD SPECIFICATIONS	GASKET GRADE	TYPES		ORIGIN
1/2" to 60" (ASME B16.5, ASME B16.47)	<ul style="list-style-type: none"> • ASTM A105 • ASTM A350 LF2 • ASTM A694 F42, F52, F60, F65, F70 	<ul style="list-style-type: none"> • ASME B16.20 • API 6A 	• Spiral Wound Gaskets (SWG)	<ul style="list-style-type: none"> • Filler: Graphite, PTFE, Ceramic • Inner Ring: SS304, SS316, Carbon Steel • Outer Ring: Carbon Steel, SS304, SS316 	<ul style="list-style-type: none"> • India • China • Japan • South Korea • Europe • USA
			• Ring Type Joint Gaskets (RTJ)	• Type R, RX, BX	
			• Flat Face Gaskets	• PTFE, Graphite, Metal Jacketed	
			• Raised Face Gaskets	• PTFE, Graphite, Metal Jacketed	
			• Corrugated Gaskets	• Graphite, PTFE, Stainless Steel	

STAINLESS STEEL GASKETS



Stainless Steel Gaskets

SIZE	MATERIALS GRADE & STANDARD SPECIFICATIONS	GASKET GRADE	TYPES		ORIGIN
1/2" to 60" (ASME B16.5, ASME B16.47)	<ul style="list-style-type: none"> • ASTM A182 F304/304L • ASTM A182 F316/316L • F9, F11, F22, F52, F91, F92, F321 	<ul style="list-style-type: none"> • ASME B16.20 • API 6A 	• Spiral Wound Gaskets (SWG)	<ul style="list-style-type: none"> • Filler: Graphite, PTFE, Ceramic • Inner Ring: SS304, SS316 • Outer Ring: SS304, SS316 	<ul style="list-style-type: none"> • Europe • India • China • Japan • South Korea • USA
			• Ring Type Joint Gaskets (RTJ)	• Type R, RX, BX	
			• Flat Face Gaskets	• PTFE, Graphite, Metal Jacketed	
			• Raised Face Gaskets	• PTFE, Graphite, Metal Jacketed	
			• Corrugated Gaskets	• Graphite, PTFE, Stainless Steel	

STUD BOLTS & NUTS



Carbon Steel Stud Bolts

CARBON STEEL STUD BOLTS

SIZE	MATERIALS GRADE & STANDARD SPECIFICATIONS	GRADE	TYPES	COATING	LENGTH
1/2" to 4" (ASME B16.5, ASME B16.47)	<ul style="list-style-type: none"> ASTM A193 B7 (Grade B7) ASTM A194 2H (Grade 2H) ASTM A320 L7 (Grade L7) 	<ul style="list-style-type: none"> B7 (High Strength) L7 (Low Temperature) B7M (Sulfide Stress Cracking Resistant) 	<ul style="list-style-type: none"> Stud Bolts with 2 Nuts Stud Bolts with 1 Nut Double End Stud Bolts Fully Threaded Stud Bolts 	<ul style="list-style-type: none"> Zinc Plated Hot Dip Galvanized PTFE Coated 	2" to 12" (Custom lengths available)
THREAD	ORIGIN				
UNC, UNF, 8UN	<ul style="list-style-type: none"> India China Japan South Korea Europe USA 				

STAINLESS STEEL STUD BOLTS



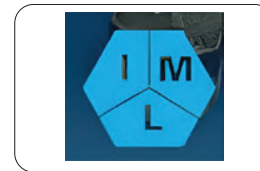
Stainless Steel Stud Bolts

SIZE	MATERIALS GRADE & STANDARD SPECIFICATIONS	GRADE	TYPES	COATING	LENGTH
1/2" to 4" (ASME B16.5, ASME B16.47)	<ul style="list-style-type: none"> ASTM A193 B8 (304, 304L, 316, 316L) ASTM A193 B8M (316, 316L) ASTM A320 B8 (304, 304L, 316, 316L) 	<ul style="list-style-type: none"> B8 (304, 304L) B8M (316, 316L) B8T (321) B8C (347) 	<ul style="list-style-type: none"> Stud Bolts with 2 Nuts Stud Bolts with 1 Nut Double End Stud Bolts Fully Threaded Stud Bolts 	<ul style="list-style-type: none"> Passivated PTFE Coated 	2" to 12" (Custom lengths available)
THREAD	ORIGIN				
UNC, UNF, 8UN	<ul style="list-style-type: none"> Europe India China Japan South Korea USA 				



PRODUCT TYPE	SIZE (RANGE)	MATERIALS GRADE & STANDARD SPECIFICATIONS
CARBON STEEL, LOW ALLOY STEEL (WELDOLET, THREADOLET, SOCKOLET, FLANGOLET, SWEEP-POLET, ELBOWLET)	½"-48"	ASTM A/SA105,ASTMA/SA350LF2
STAINLESS STEEL, ALLOY STEEL	½"-60"	ASTM A/SA182 F304/304L/F316/316L, F9,F11, F22/ F52/F91/F92/F321, UNS32750

Brands We Offer



STRUCTURAL HAMMER UNIONS



MATERIALS	TYPES	SIZES	END CONNECTIONS	PRESSURE RATINGS
<ul style="list-style-type: none"> Carbon Steel (A105, A350 LF2) Stainless Steel (A182 F304, A182 F316) Alloy Steel (A182 F11, A182 F22) 	<ul style="list-style-type: none"> Figure 100 Figure 150 Figure 200 Figure 300 Figure 400 Figure 600 	<ul style="list-style-type: none"> 1" 1.5" 2" 2.5" 3" 4" 	<ul style="list-style-type: none"> NPT (National Pipe Taper) Line Pipe Thread Welded 	<ul style="list-style-type: none"> 1000 PSI (Figure 100) 1500 PSI (Figure 150) 2000 PSI (Figure 200) 3000 PSI (Figure 300) 4000 PSI (Figure 400) 6000 PSI (Figure 600)
STANDARDS	TESTING	ORIGIN		
<ul style="list-style-type: none"> API 6A ASME B16.11 	<ul style="list-style-type: none"> Hydrostatic Testing API 6A PSL 1, 2, 3 	<ul style="list-style-type: none"> USA Europe India China 		

Size Inches	Nut Radius Inches	Length Total Inches	Pressure Rating (PSI)				Weight (LBS) (Approx.)
			Standard Service		Sour Gas Services		
			Cold Working	Test	Cold Working	Test	
2	3.54	5.13	4,000	6,000	4,000	6,000	12.46
3	4.17	6.14	4,000	6,000	4,000	6,000	20.13
4	5.04	8.18	4,000	6,000	4,000	6,000	31.24
5	6.70	11.10	2,500	4,000	2,500	4,000	49.60
6	7.70	11.40	2,500	4,000	2,500	4,000	63.47
12	10.26	10.90	2,500	4,000	2,500	4,000	164.90

GI & MS FITTINGS



GI & MI



GI & MI - 2



GI & MI - 3



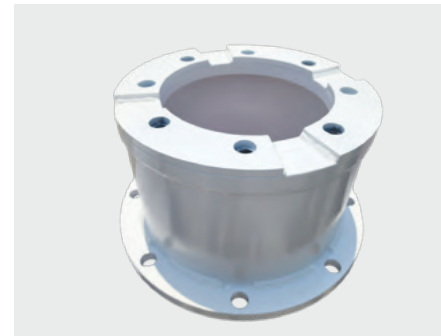
MI GI PIPE OVER FITTINGS

MATERIALS	TYPES	SIZES	STANDARDS	PRESSURE RATINGS	END CONNECTIONS
<ul style="list-style-type: none"> Galvanized Iron (GI) Mild Steel (MS) Carbon Steel Stainless Steel (304, 316) 	<ul style="list-style-type: none"> Elbows (90°, 45°) Tees (Equal, Reducing) Couplings (Equal, Reducing) Unions Bushings Plugs Nipples Flanges (Slip On, Weld Neck, Blind) Socket Weld Fittings Threaded Fittings 	1/2" to 12" (DN15 to DN300)	<ul style="list-style-type: none"> ASME B16.3 (Malleable Iron) ASME B16.9 (Factory-Made Wrought Steel Butt welding) ASME B16.11 (Forged Fittings, Socket-Welding & Threaded) IS 1239 (GI Fittings) 	<ul style="list-style-type: none"> Class 150 Class 300 Class 600 	<ul style="list-style-type: none"> Threaded (NPT, BSP) Socket Weld Buttweld
COATING	ORIGIN				
<ul style="list-style-type: none"> Galvanized (Zinc Coated) Black (Uncoated) 	<ul style="list-style-type: none"> India China UAE (Local stock) Europe 				

CUSTOM FABRICATION ITEMS



MATERIALS	TYPES	FABRICATION CAPABILITIES	SIZE RANGE
<ul style="list-style-type: none"> Carbon Steel Stainless Steel (304, 304L, 316, 316L, 321, 347) Duplex Steel (2205, 2507) 	<ul style="list-style-type: none"> Pipe Spools Pipe Fittings (Elbows, Tees, Reducers, etc.) Flanges (Slip On, Weld Neck, Blind, etc.) Valves (Gate, Globe, Check, Ball, etc.) Skids & Modules Pressure Vessels Heat Exchangers Tanks & Containers 	<ul style="list-style-type: none"> Cutting & Beveling Welding (SMAW, GTAW, GMAW) Machining Bending & Forming Surface Treatment (Pickling, Passivation, Painting, etc.) 	<ul style="list-style-type: none"> Pipes: 1/2" to 120" Plates: Up to 6m x 12m x 150mm thick Custom sizes available
STANDARDS & CODES	INSPECTION & TESTING	ORIGIN	APPLICATION INDUSTRIES
<ul style="list-style-type: none"> ASME B31.1, B31.3 ASTM, API, EN 	<ul style="list-style-type: none"> Visual Inspection Dimensional Check Radiography (RT) Ultrasonic Testing (UT) Hydrostatic Testing 	<ul style="list-style-type: none"> India UAE (Local fabrication & assembly) 	<ul style="list-style-type: none"> Oil & Gas Petrochemical Power Generation Water Treatment Construction



INDUSTRIAL TYPE



OIL & GAS



MARINE



BUILDING & INFRASTRUCTURE



UTILITIES PLANT



AUTOMOTIVE



HYDRO POWER & DAMS



SEWAGE, DEWATERING & WATER TREATMENT



CHEMICAL INDUSTRIES



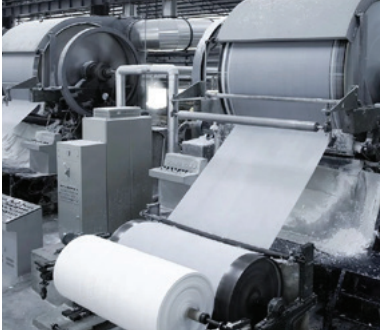
MINING INDUSTRIES



ENERGY



PULP & PAPER INDUSTRY



FMCG



ROADS & RAIL



AIRPORT & SEAPORT CONSTRUCTION





SERVICES WE OFFER

| PIPING & PIPELINE PROJECT PACKAGES



| PIPING SPOOLS



| FABRICATION & WELDING



| PAINTING & SPECIAL COATING



| GALVANIZING



| INSPECTION



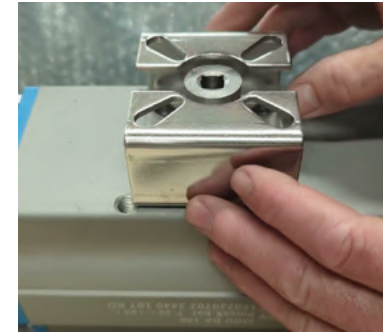
| HEAT TREATMENT



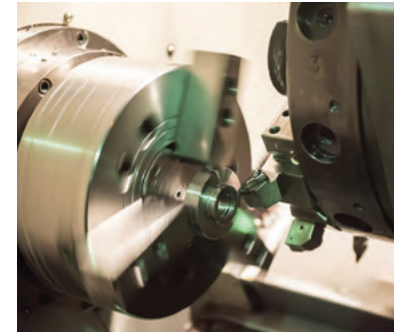
| LAB TESTING



| VALVE MOUNTING



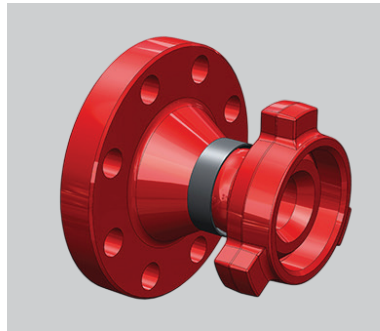
| MACHINING



| LOGISTICS



| CROSS OVER



| MANIFOLD



| TEST THUG



INDUSTRIES WE SERVE

OIL & GAS



**SEWAGE &
WATER TREATMENT**



**SEA PORT
CONSTRUCTION**



**BUILDINGS &
INFRASTRUCTURE**



MARINE



**UTILITIES
PLANTS**





Quality Piping Solutions

Office No. 17, 1st Floor, Madina Mall, Al Qusais, Dubai - UAE.

sales@qualitypipings.com

www.qualitypipings.com | [f](#) [@](#) [v](#) [qps4.u](#)

